

G2LED | GC Series LED Canopy Light

Product Overview

An Energy Conserving Lighting Solution for companies, developers, architects and municipalities faced with ever increasing energy cost.

The G2 LED GC LED Canopy Light provides an attractive bright white light that operates at a fraction of the energy and maintenance cost of fluorescent and other LED solutions.

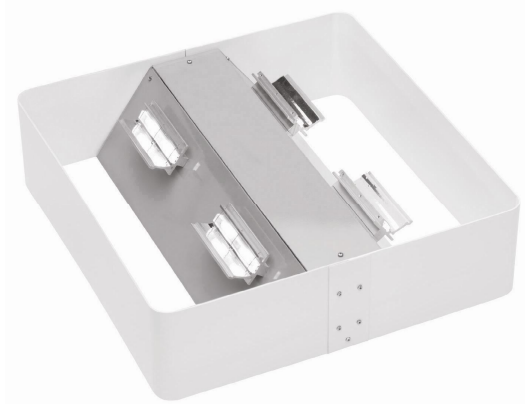
- + Increase the pull to your business with beautiful lighting that customers will notice.
- + Consistent overall light coverage eliminates shadows and enhances security of the gas / service station
- + Bright, consistent light output closely emulates natural daylight with no glare
- + Meets full cut-off requirements to protect neighbors and passing motorists from distracting lights
- + Designed to illuminate both the station features/fixtures and the driveway under the canopy
- + Mechanically designed for simple, straightforward installation via flush-mount or down-pole

Applications

- Gas Station
- Parking Garage
- Car Ports
- Basement
- Storage Facility
- Garage
- Park Canopy

GC Series

Product Code	LED Watts	Light Equivalent	Suggested Mounting
GC-5160	45Watt	400w	16 ft.



Key Features

- Significant Energy Savings
 - Reduce energy consumption by 50-85%
- Full Color Spectrum
- Increased brilliancy
- Produces a more visible “white light” compared to yellow or dim lighting.
 - Improved light quality and reduced glare
 - Increase safety
- Lighter weight for less stress on structure
- UV Free | Attracts fewer insects as bugs are attracted to UV rays produced by light
- Increased control over light footprint to produce directional light and minimize light pollution
- Instant “On” with no warm-up required
- Patented (US and International) LED technology

Supports Green Initiatives

- 100 Mercury Free
- No Toxic Materials
- 200,000 light hours per LED unit
 - Less product waste
 - Less maintenance cost
- Made in the USA
 - Less fuel for transportation
 - Supports Go Local Initiatives
- Consumes less energy
 - 80% more efficient in every application
- International Dark-Skies Association
 - Full cutoff compliant



MADE IN THE USA

Designed, engineering and manufactured in Texas, USA by Ringdale Technologies.



Photometrics

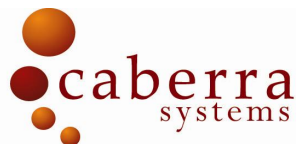
Not available at time of sales sheet creation.

Specifications

Product Number	00-27-6600-5160		Mounting	Standard canopy bolt hole placement
Dimensions	19"(W) x 19"(D) x 6"(H) (48.3 x 48.3 x 12.7 cm) 5.5 pounds (2.5 kg)		Finishes	Standard: Black, Brown, White Custom Colors Available
LED Watts	56		Fixture Design	Commercial grade aluminum surround Fixture utilizes standard 3 wire connection
Light Output Equivalent	150-400 high pressure sodium, incandescent or metal halide		Expected Life	60,000 Lumen Hours
Voltage	Universal 100v-277v		Input Voltage	Auto-sensing, 90..277 Volts AC, 50/60 Hz
Power	60		Operating Temp	-40.. +60 deg C -40.. +140 deg F
Power Factor	>.95		Efficacy	70-110 Lumens/Watt
Color Temp.	5500K		Scotopic Advantage	Factor x1.7
LED Performance	Generation 2 LED SE x4		Patents	3 international patents
Energy Factor	.0.95 (at 208V)		Standards	Regulatory Compliance CD# 1601-09A
Warranty	5 year			

Factory Installed Options

- Motion Sensor
- Dimmer
- Mounting Hardware
- Battery Backup Opt – 10-15 hrs/charge, 4-6 year life
- Backup power supply Redundancy applications
- Bulletproof Industrial Glass



Headquarters
47025 WCR 26 ½
Wiggins, CO 80634
Main: 970.506.0525
Fax: 970.373.4552

Sales and Channel Management
Direct: 970.690.7568
sales@g2led.com
www.G2LED.com

