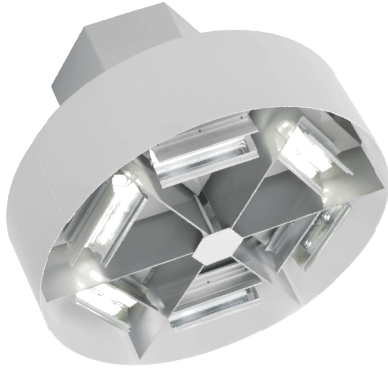


# ActiveLED™ HBR Series High Bay Light



## Overview

G2LED Lighting with patented ActiveLED™ technology from Ringdale provides superior illumination for general industrial, manufacturing, retail and warehousing applications. By incorporating patented ActiveLED technology, the High Bay Light achieves energy savings of 50-85 percent over conventional lighting sources. The intelligent controller and options enable advanced energy management capabilities, thereby providing additional savings. The 90,000-hour LED lumen life is superior to any other light available today. Imagine a light lasting for 20 years when used an average of 12 hours a day.

## Technical Specifications

Dimensions	16"W x 16"D x 10"H (40.6 x 40.6 x 25.4 cm)
Mounting	High bay mounting hook
Light Output	7920 LED Device Lumens
Fixture Watts	81 watts
Efficacy	110 LED Device Lumens/Watt
CCT	5500K
Power Factor	>.95
Input Voltage	100-277V AC
Lumen Lifetime	90,000 hours (95% Luminous Flux)
Weight	13 lbs. (6 Kg)
Listings and Tests	UL and CE listed, suitable for damp locations. RoHS compliant, LM-79 and LM-80 info available.
Warranty	10 years: LED elements 5 years: materials and workmanship

## Key Features & Benefits

- Significant Energy Savings – Replaces up to 400 watt fixture with 81 watt fixture
- Ideal lighting for general industrial, manufacturing, retail and warehousing applications
- Replaces yellow or dim lighting with more visible “white light” for improved light quality and uniformity
- Increases control over light footprint to produce directional light and minimize light spillage and wasted energy
- Lower heat emission with small infrared footprint
- Environmentally safe lighting
  - Zero mercury content
  - Eliminates disposal of hazardous material
  - Facilitates LEED points
- Options
  - Motion Sensor
  - Digital Dimmer
  - Battery Backup
- Made in the USA – Designed and manufactured exclusively by Ringdale

Learn More about ActiveLED  
Caberra Systems, Inc.  
[www.g2led.com](http://www.g2led.com)

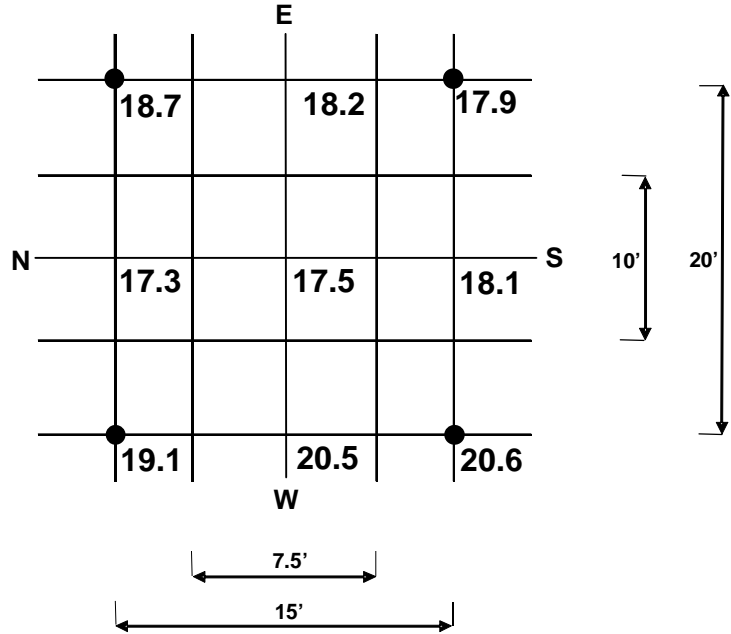


# ActiveLED™ HBR Series High Bay Light

## Photometric Light Level Data for HLH-0075 LED High Bay Light

The schematic shows the light level measurements for the LED High Bay Light at a mounting height of 20'.

The grid below shows the even light level pattern for four (4) High Bay Lights spaced 15' x 20'.



**INFORMATION | SALES | PRICING**  
 Caberra Systems, Inc.  
 47025 WCR 26 1/2, Wiggins, Colorado 80654  
 DIRECT: 970.506.0525 | FAX: 970.373.4552  
[www.g2led.com](http://www.g2led.com) | Email: [sales@g2led.com](mailto:sales@g2led.com)

